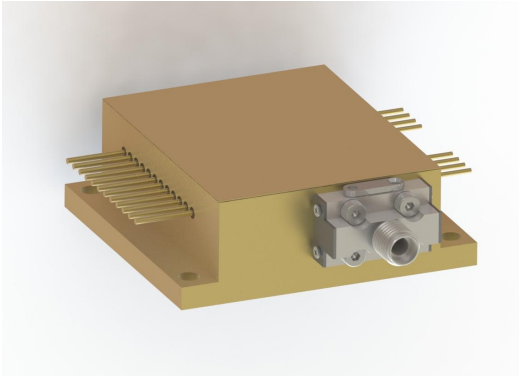
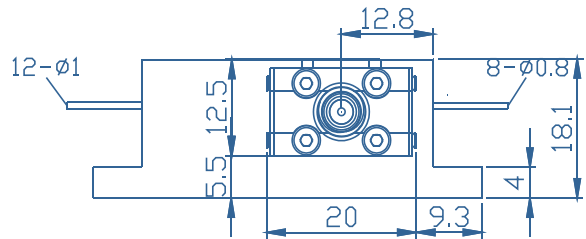
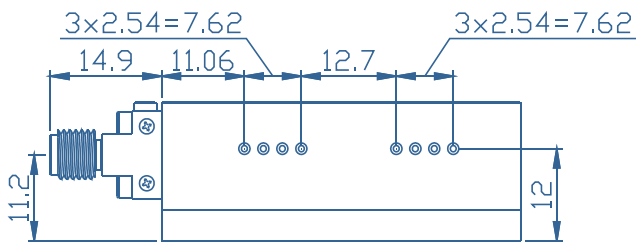


## G-Series High Power Laser Diode Module

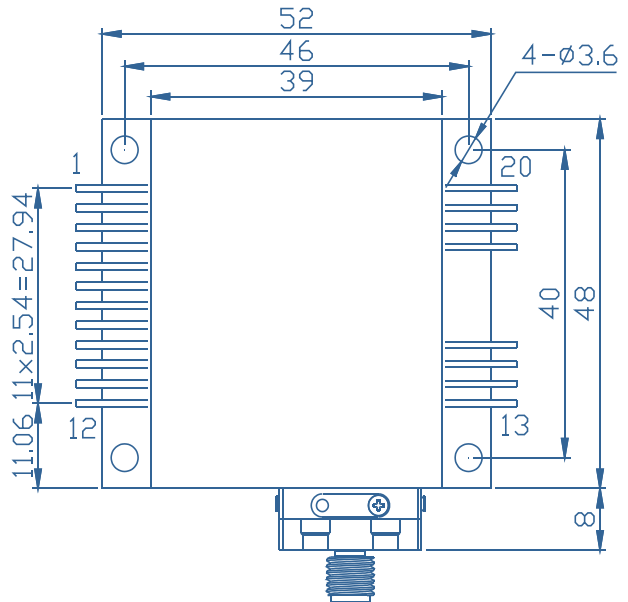


- Features**
- ◆ High output power of 6W
  - ◆ 200μm/0.22NA multimode optical fiber
  - ◆ Center wavelength 450±10nm
- Applications**
- ◆ Medical applications

### Package Dimensions (mm)



Pin-out Assignment			
Pin	Function	Pin	Function
1	Aiming Beam(-)	11	-
2	Aiming Beam(+)	12	450LD(+)
3	450LD (-)	13	Fiber Connector Detector LED (-)
4	-	14	Fiber Connector Detector LED (+)
			Fiber Connector Detector PD(N)
5	-	15	Fiber Connector Detector PD(P)
6	-	16	-
7	-	17	PD(N)
8	-	18	PD(P)
9	-	19	Thermistor
10	-	20	Thermistor



## Typical Device Performance (25°C)

	Typical	Unit
<b>Optical</b>		
Center Wavelength	6	W
CW Output Power	450±10	nm
Spectral Width (90%Energy)	<10.0	nm
Wavelength Shift with Temperature	0.33	nm /°C
<b>Electrical</b>		
Threshold Current	0.7	A
Operating Current	2.6	A
Operating Voltage	8.4	V
Slope Efficiency	3.1	W / A
Power Conversion Efficiency	27.5	%
<b>Aiming laser **</b>		
CW Output Power	10	mW
Center Wavelength	640±10	nm
Operating Current	-	mA
Operating Voltage	5	V
<b>Fiber*</b>		
Fiber Core Diameter	200	µm
Fiber Cladding Diameter	220	µm
Fiber Buffer Diameter	500	µm
Numerical Aperture	0.22	-
Fiber Length	1-5	m
Fiber Connector	-	-
<b>Other</b>		
PD	100-1000	uA

\* Customized fiber and connector available.

## Absolute Ratings

	Min	Max	Unit
Operating Temperature	15	35	℃
Operating Relative Humidity	-	75	%
Storage Temperature	-20	80	℃
Storage Relative Humidity	-	90	%
Lead Soldering Temperature (10 s max)	-	250	℃

This instruction is for reference only. Han's TCS improves its products continually, therefore may change specifications without notice to customers, for details, please contact with Han's TCS sales.

@2022 Han's TianCheng Semiconductor Co., Ltd. All rights reserved.