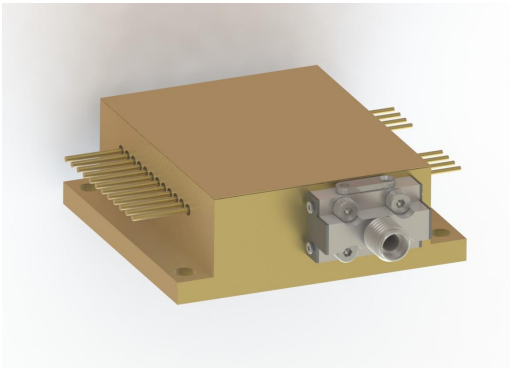
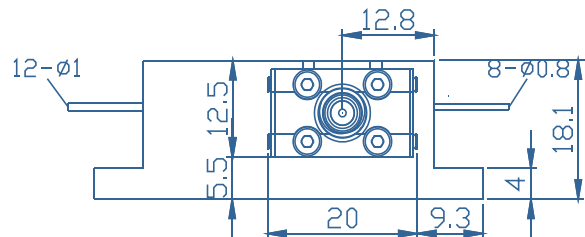
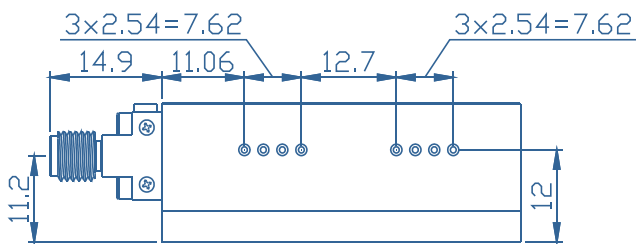


G-Series High Power Laser Diode Module

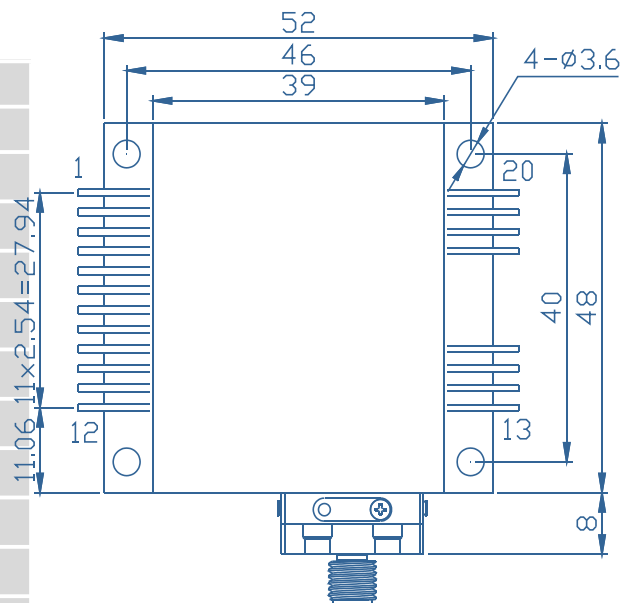


- Features**
- ◆ High output power of 8/10/8/0.2W
 - ◆ 400μm/0.22NA multimode optical fiber
 - ◆ Center wavelength 1064/980/808/640±10nm
- Applications**
- ◆ Medical applications

Package Dimensions (mm)



Pin-Out Assignment			
Pin	Function	Pin	Function
1	1064 LD (+)	11	640 LD (-)
2	1064 LD (-)	12	640 LD (+)
3	980LD (+)	13	-
4	980LD (-)	14	-
5	-	15	-
6	-	16	-
7	-	17	PD (N)
8	-	18	PD (P)
9	808 LD (-)	19	Thermistor
10	808 LD (+)	20	Thermistor



Typical Device Performance (25°C)

	Typical				Unit
Optical					
Center Wavelength	8	10	8	0.2	W
CW Output Power	1064±10	980±10	808±10	640±10	nm
Spectral Width (90%Energy)	<10.0				nm
Wavelength Shift with Temperature	0.33				nm / °C
Electrical					
Threshold Current	1.0	1.3	2.0	0.2	A
Operating Current	11.0	12.5	10.0	0.5	A
Operating Voltage	1.5	1.6	1.8	2.3	V
Slope Efficiency	0.8	0.9	1.0	0.7	W / A
Power Conversion Efficiency	50.0	49.0	43.0	17.0	%
Fiber*					
Fiber Core Diameter	400				µm
Fiber Cladding Diameter	440				µm
Numerical Aperture	0.22				-
Fiber Length	1-5				m
Fiber Connector	-				-

* Customized fiber and connector available.

Absolute Ratings

	Min	Max	Unit
Operating Temperature	15	35	°C
Operating Relative Humidity	-	75	%
Cooling Mode	-	Water cooling (25°C)	-
Storage Temperature	-20	80	°C
Storage Relative Humidity	-	90	%
Lead Soldering Temperature (10 s max)	-	250	°C

This instruction is for reference only. Han's TCS improves its products continually, therefore may change specifications without notice to customers, for details, please contact with Han's TCS sales.

@2023 Han's TianCheng Semiconductor Co., Ltd. All rights reserved.