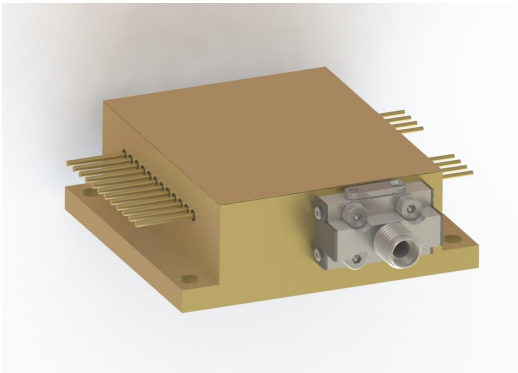
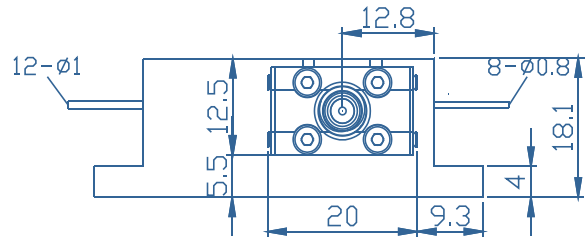
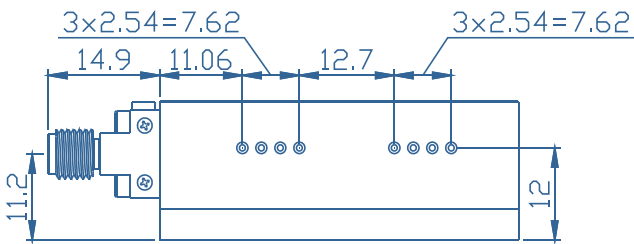


## G-Series High Power Laser Diode Module

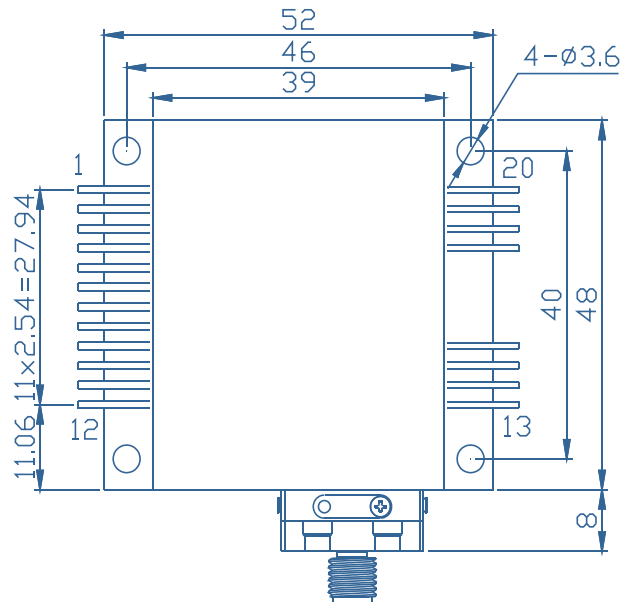


- Features
- ◆ High output power of 15/15W
  - ◆ 200μm/0.22NA multimode optical fiber
  - ◆ Center wavelength 980/808±10nm
- Applications
- ◆ Medical applications

### Package Dimensions (mm)



| Pin-out Assignment |            |     |                                  |
|--------------------|------------|-----|----------------------------------|
| Pin                | Function   | Pin | Function                         |
| 1                  | 980 LD (+) | 11  | Aiming Beam(+)                   |
| 2                  | -          | 12  | Aiming Beam(-)                   |
| 3                  | -          | 13  | Fiber Connector Detector LED (-) |
| 4                  | 980 LD(-)  | 14  | Fiber Connector Detector LED (+) |
|                    |            |     | Fiber Connector Detector PD(N)   |
| 5                  | -          | 15  | Fiber Connector Detector PD(P)   |
| 6                  | 808 LD(+)  | 16  | -                                |
| 7                  | -          | 17  | PD(N)                            |
| 8                  | -          | 18  | PD(P)                            |
| 9                  | 808 LD (-) | 19  | Thermistor                       |
| 10                 | -          | 20  | Thermistor                       |



**Typical Device Performance (25°C)**

|                                   | Typical  |        | Unit   |
|-----------------------------------|----------|--------|--------|
| <b>Optical</b>                    |          |        |        |
| Center Wavelength                 | 15       | 15     | nm     |
| CW Output Power                   | 980±10   | 808±10 | W      |
| Spectral Width (90%Energy)        | <10.0    |        | nm     |
| Wavelength Shift with Temperature | 0.33     |        | nm /°C |
| <b>Electrical</b>                 |          |        |        |
| Threshold Current                 | 1.3      | 1.6    | A      |
| Operating Current                 | 10       | 9.2    | A      |
| Operating Voltage                 | 3.2      | 3.8    | V      |
| Slope Efficiency                  | 1.7      | 1.9    | W / A  |
| Power Conversion Efficiency       | 47.0     | 43.0   | %      |
| <b>Aiming laser *</b>             |          |        |        |
| CW Output Power                   | 2        |        | mW     |
| Center Wavelength                 | 640±10   |        | nm     |
| Operating Current                 | <500     |        | mA     |
| Operating Voltage                 | 2        |        | V      |
| <b>Fiber**</b>                    |          |        |        |
| Fiber Core Diameter               | 200      |        | μm     |
| Fiber Cladding Diameter           | 220      |        | μm     |
| Fiber Buffer Diameter             | 500      |        | μm     |
| Numerical Aperture                | 0.22     |        | -      |
| Fiber Length                      | 1-5      |        | m      |
| Fiber Connector                   | -        |        | -      |
| <b>PD</b>                         |          |        |        |
| PD                                | 100-1000 |        | uA     |

\*Aiming laser:Built-in constant power circuit, 5V power supply needed.

\*\* Customized fiber and connector available.

## Absolute Ratings

|                                       | Min | Max                  | Unit |
|---------------------------------------|-----|----------------------|------|
| Operating Temperature                 | 15  | 35                   | °C   |
| Operating Relative Humidity           | -   | 75                   | %    |
| Cooling Mode                          | -   | Water cooling (25°C) | -    |
| Storage Temperature                   | -20 | 80                   | °C   |
| Storage Relative Humidity             | -   | 90                   | %    |
| Lead Soldering Temperature (10 s max) | -   | 250                  | °C   |

This instruction is for reference only. Han's TCS improves its products continually, therefore may change specifications without notice to customers, for details, please contact with Han's TCS sales.

@2023 Han's TianCheng Semiconductor Co., Ltd. All rights reserved.