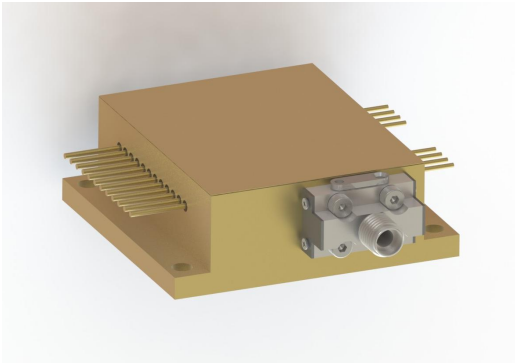
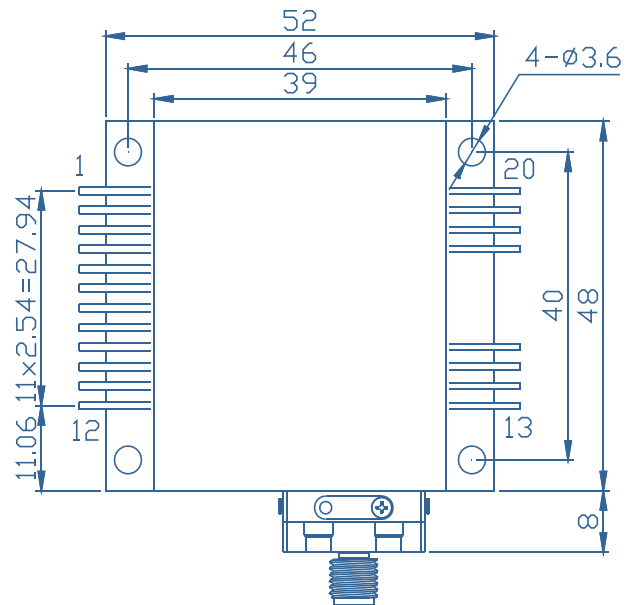
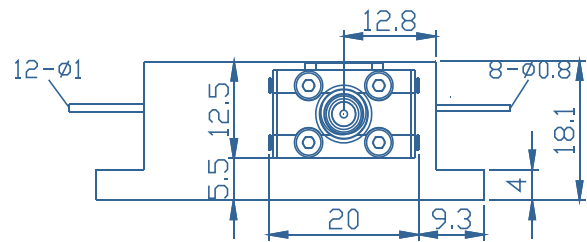
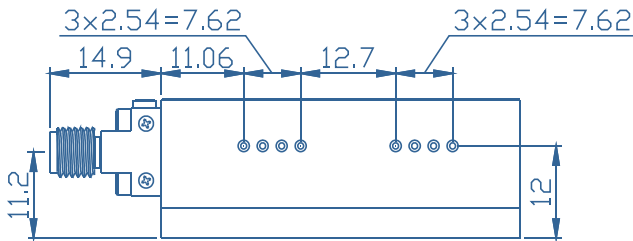


G-Series High Power Laser Diode Module



- Features
- ◆ High output power of 12/6W
 - ◆ 200μm/0.22NA multimode optical fiber
 - ◆ Center wavelength 980/445±10nm
- Applications
- ◆ Medical applications

Package Dimensions (mm)



Pin-out Assignment

Pin	Function	Pin	Function
1	980 LD (+)	11	445 LD(-)
2	980 LD(-)	12	-
3	Aiming Beam(+5V)*	13	Fiber Connector Detector LED (-)
4	Aiming Beam(0V)	14	Fiber Connector Detector LED (+)
5	-	15	Fiber Connector Detector PD(N)
6	445 LD (+)	16	Fiber Connector Detector PD(P)
7	-	17	-
8	-	18	PD(N)
9	-	19	PD(P)
10	-	20	Thermistor

*Built-in constant power circuit, 5V power supply needed.

Typical Device Performance (25°C)

	Typical		Unit
Optical			
Center Wavelength	980±10	445±10	nm
CW Output Power	12	6	W
Spectral Width (90%Energy)	<10		nm
Wavelength Shift with Temperature	0.3		nm / °C
Electrical			
Threshold Current	1.3	0.8	A
Operating Current	14.7	2	A
Operating Voltage	1.73	8	V
Slope Efficiency	0.89	5	W / A
Power Conversion Efficiency	47	37	%
Aiming laser **			
CW Output Power	2		mW
Center Wavelength	650±10		nm
Operating Current	-		mA
Operating Voltage	5		V
Fiber*			
Fiber Core Diameter	200		µm
Fiber Cladding Diameter	220		µm
Numerical Aperture	0.22		-
Fiber Length	1-5		m
Fiber Connector	-		-

* Customized fiber and connector available.

Absolute Ratings

	Min	Max	Unit
Operating Temperature	15	35	°C
Operating Relative Humidity	-	75	%
Cooling Mode	-	Water cooling (25°C)	-
Storage Temperature	-20	80	°C
Storage Relative Humidity	-	90	%
Lead Soldering Temperature (10 s max)	-	250	°C

This instruction is for reference only. Han's TCS improves its products continually, therefore may change specifications without notice to customers, for details, please contact with Han's TCS sales. @2022 Han's TianCheng Semiconductor Co., Ltd. All rights reserved.